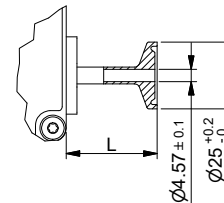
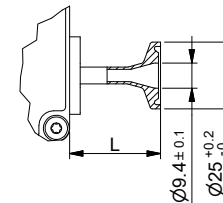


Dimension 1/4" triclamp


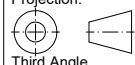


Dimension 1/2" triclamp



CONNECTOR DIMENSIONS	
Outside connection	L
1/8" OD compression type	19*
1/4" OD compression type	24*
3 mm OD compression type	43*
6 mm OD compression type	24*
Triclamp 1/4"	34
Triclamp 1/2"	34
1/4" Face Seal male	45

* Typical fingertight dimensions
Dimensions subject to change without notice

Title: Dimensional Drawing ES-1xxC		Drawn by: K.T. Date: 03-12-2020	Revision Description: Connectors added to table	
 Projection:  Third Angle Dimensions: Metric (mm)		Rev. by: M.d.J. Date: 12-10-2023	Scale: 1 : 2	
		Checked: F.L. Date: 12-10-2023		
General tolerances.: ±0.5		Drawing no.: 7.15.220	Rev: C	Page: 1 - 1